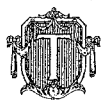


THE AUDITORIUM

*As it will appear when completed.*



THE AUDITORIUM" now being built by the Reorganized Church of Jesus Christ of Latter Day Saints is located at the general church headquarters at Independence, Missouri. The building was started in February, 1926, and although incomplete it has already housed several of the chief legislative assemblies of the church. As further details of the structure are completed more of the general activities of the church will center here. Visitors are welcome, and guides are available to conduct parties through the building and to explain its major points of interest.



**Reorganized Church of Jesus Christ  
of Latter Day Saints**

INDEPENDENCE, MISSOURI

---

---

## Orchestra and Band

A movable platform, semicircular in form, extending in front and to the right and left of the speaker's stand, will seat seventy-five musicians. This platform can be lowered eight feet below the level of the first floor, thus permitting the band or orchestra to enter from the lower entrance. When the musicians are seated and ready, the platform can be raised to the level of the speaker's stand, with everything in readiness for the program.

Special rooms have been provided for orchestra and band practice in which also are ample space for equipment, library, etc.

## Lower Auditorium

Beneath the main auditorium is a secondary assembly room with a seating capacity of three thousand. It has a stage at the northern end, measuring thirty feet by forty feet. This room is admirably adapted for concerts, lectures, dramatic productions, and similar events. Here the annual Harvest Festival is held in October. Each year many thousands of quarts of canned goods and many bushels of fresh fruits and vegetables are attractively displayed for several days. After the festival is over the food is made available for the support of the poor.

## Supplementary Rooms

Provision is made in the building for many supplementary classrooms, rest rooms, a nursery, a hospital section, etc. The hospital section, for example, will be fitted with beds and all necessary equipment to give temporary relief, in cases of accident or of sudden illness.

## The Subway

The subway entrance, below the level of the main entrance, can be used to especially good advantage in wet or cold weather. Here cars may unload passengers without discomfort and access may be gained to any part of the building. Heavy or bulky furnishings, or exhibits for the conventions or festivals are unloaded here or at the side entrance.

## Kitchen and Dining Room

At the south end of the lower auditorium is a kitchen specially designed to facilitate preparation and service of food. Considerable modern equipment has already been installed here, and large gatherings have been easily and quickly served. It is intended that further equipment will be installed as the building nears completion. One thousand guests can be served at one time in this way.

---

---

## Dimensions and Materials

The building has a frontage of 250 feet, and a depth of 270 feet. From the basement of the Auditorium level to the top of the dome is 131 feet and from the main floor level to the ceiling is 76 feet. The foundation walls are two feet six inches thick. One can wander more than a mile along its ramps and corridors without traversing a single step which has already been covered. One hundred and four reinforced concrete columns carry the weight of the interior.

Immense quantities of material have been used in the work of construction, including:

- 1,600 tons of steel.
- 9,000 tons of sand.
- 62,000 sacks of cement.
- 893,625 building brick.
- 6,590 yards crushed rock.

## The Dome

Possibly the most noteworthy architectural feature of the Auditorium is the dome, which is elliptical in form, measures 214 feet by 168 feet at the base, and has an outside surface area of approximately 27,000 square feet. Ten steel trusses span the main auditorium room from east to west. The roof rests on thirty-two structural steel supports, the footings of which have been carried down to the ledge of solid rock which underlies the entire Auditorium structure. The two center trusses weigh fifty-eight tons each, and were raised into position in six sections.

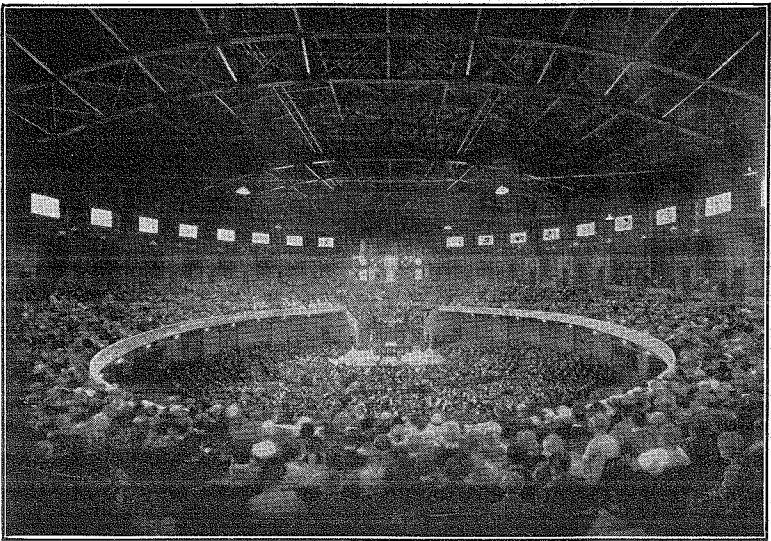
There was a tense moment when the last of the great steel girders was set in its place and when the final tie-in steel beams were placed in position for riveting. Yet there was no need for concern. So carefully had the work been done and so nicely had the plans and drawings been coordinated with the work of the steel company, that it was only necessary to absorb one eighth of an inch at the top of the column to make the steel network into a rigid frame.

The dome is covered with a two-inch slab of gunite (concrete), 4,220 sacks of cement and 435 yards of sand being required for the surface covering. Waterproofing will be applied, and, finally, sheet copper will form the permanent outside covering.



THE OFFICE OF PRESIDENT FREDERICK M. SMITH

*All general church offices are temporarily located on the south side of the Auditorium. When the building is completed these offices will be permanently placed at the front, or north side of the building.*



*One of the earliest conference assemblies held in the Auditorium.*

---

---

## Lighting

The skylight opening at the crown of the dome is thirty-four feet by fifty-six feet, and will be covered with reinforced glass. Additional light will enter the main auditorium room through twenty-nine cathedral glass windows which encircle the base of the dome above the upper balcony line. Four lightshafts, one in each corner of the building, extending from the roof to the lowest basement level, provide additional daylight for the ramps and corridors. As the building is completed an indirect system of electric lighting will be installed.

## Main Auditorium

The main auditorium is constructed for the spoken word, and seats seven thousand people on the floor and balcony. When seated every person has an unobstructed view of the speaker's stand, since there are no supports or pillars of any kind in this room and each row of seats is slightly higher than the row in front of it. Two sections on the main floor of the Auditorium, at the right and left of the speaker's stand, have been fitted with special equipment to accommodate those who do not hear readily. Each seat in these sections may be equipped with a headphone connected with the loudspeaker on the platform.

## Balcony and Choir

The balcony is a huge ellipse constructed of steel encased in concrete. It is supported on the cantilever principle, which eliminates all columns and supports. Anyone seated in the balcony can obtain an uninterrupted view of the speaker's stand. The balcony seats back of the platform merge into the choir loft. This seating arrangement is such that unlimited expansion can be had to the right and left, so that massed choirs can be accommodated on special occasions. One noteworthy occasion when this seating was particularly advantageous was at the Centennial Conference held in 1930. At this time the Oratorio, "The Course of Time," specially written by a Latter Day Saint composer, was sung by a choir of seven hundred and fifty voices, representing church choirs all over the world.

## The Pipe Organ

At the south end of the building, behind and above the choir seats, is the place reserved for the pipes and equipment of the Auditorium organ. The organ console will be on the orchestra platform near the speaker's stand. An echo organ will be placed above the foyer in the north end of the Auditorium.

---

---

## Heating and Ventilation

The heating plant and mechanical equipment is located in specially constructed rooms outside the southeast corner, below the basement level. The ventilating fans located on the east and west sides of the basement will force filtered air over steam-heated coils. This air will then be conveyed to the main auditorium and other rooms and will enter from above. It will be taken off near the floor by ducts provided for that purpose. In summer the operation will be reversed, and fresh filtered air will be injected at the floor level and taken off by ducts located in the upper areas.

## Purpose and Use of the Building

The chief purpose of the Auditorium is to accommodate the general conferences of the church, as well as regional and local gatherings. These general conferences, held in April of each year or of alternating years, are legislative and educational assemblies and attract delegates and ex officio members from each of the eighty missions and administrative districts of the church.

The offices of the spiritual and financial authorities of the church are at present housed on the upper floors to the rear (south) of the building. In the final arrangement it is intended that the offices of the general authorities will be located in the north end of the building where provision has already been made for adequate office space. Under this arrangement the entire activities of the church will radiate from this center.

PRINTED IN THE U. S. A.

---

---